

PART OF S.W. 1/4 SEC. 15, T.5N., R.1W., S.L.B. & M.  
**OAK CREEK ESTATES PHASE 4**

\*LOTS 43 & 45 AMENDED

TAXING UNIT: 27

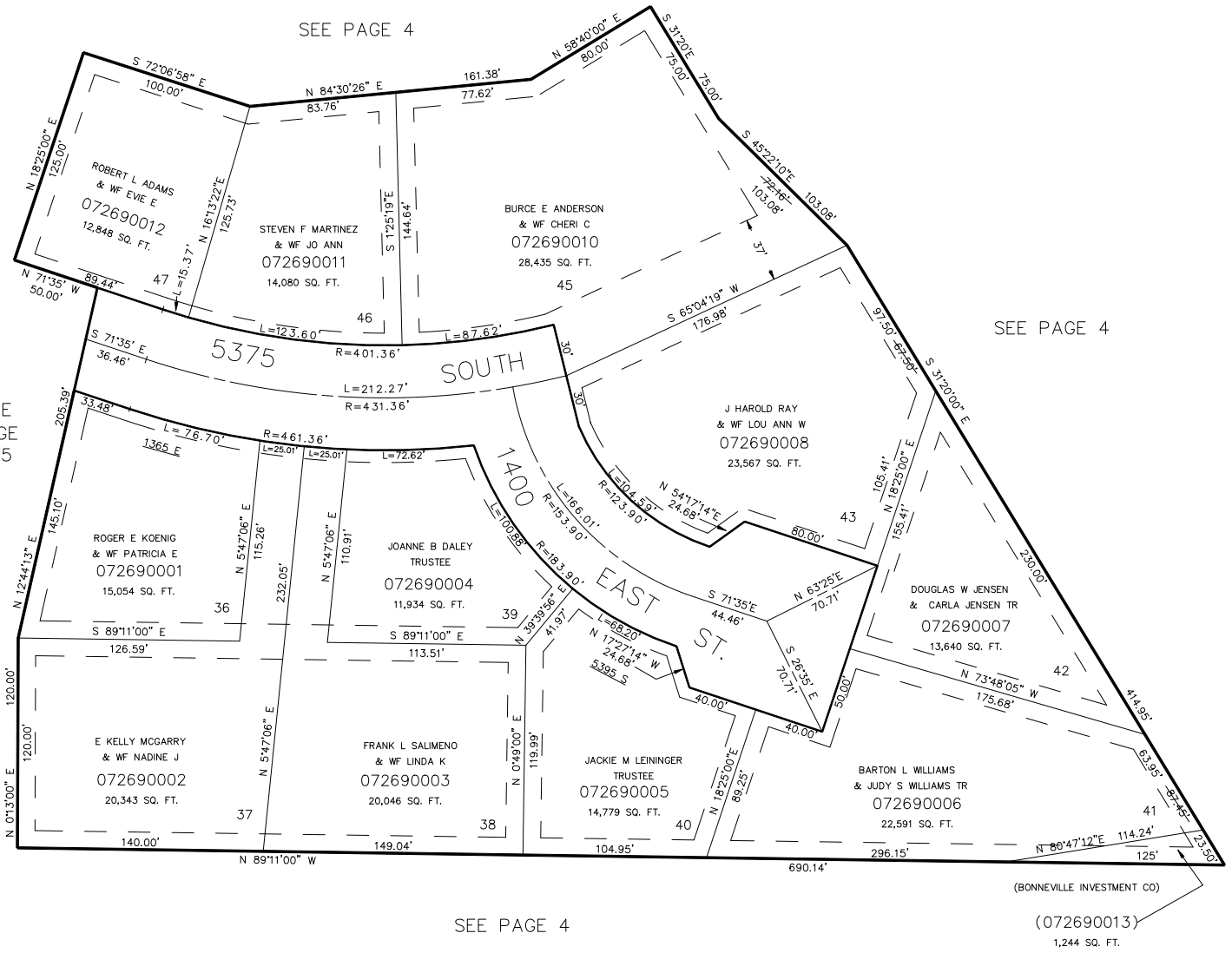
IN SOUTH OGDEN CITY  
 SCALE 1" = 50'

SEE PAGE 4

SEE PAGE 4

SEE PAGE 225

SEE PAGE 4



10' UTILITY EASEMENTS EACH SIDE OF PROPERTY LINE AS INDICATED BY DASHED LINES. ALL ESMTS TO BE USED FOR IRRIG, WATERLINES, DRAINAGE, SANITARY & STORM SEWERS, POWERLINES, TELEPHONE LINES & OTHER PUBLIC UTILITIES. FRONT PROPERTY LINE UTILITY EASEMENTS ARE 7' WIDE. OTHERS AS SHOWN.

FOR COMPLETE ENG DATA SEE ORIGINAL DEDICATION PLAT IN BOOK 23, PAGE 86 OF RECORDS. \*BOOK 26, PAGE 3, AMENDED.